

CONTENTS

Before starting the installation, ensure that all components listed below are supplied:

- 1x Cabinet Lock
- 1x screw kit
- 1x warranty information
- 1x installation instructions
- 1x diode

IMPORTANT INSTALLATION AND FIXING INSTRUCTIONS

1. Ensure the Cabinet Lock meets your physical (dimensions), grade/rating and electrical specification before going any further. It is recommended to verify that the cabinet construction allows the use of the device.
2. Before fitting this product, the door should be checked to ensure correct hanging and freedom from binding.
3. The Cabinet Lock shall be installed using the specified fasteners and instructions for the door type and installation the Cabinet Lock is designed for.
4. The bolts, heads, and keepers must be fitted to provide secure engagement. Care shall be taken to ensure that no projection of the bolt heads, when in the withdrawn position, interfere with the operation of the Cabinet Lock, door fitment, or prevent the door from swinging/sliding freely.
5. Fixing instructions must be carefully followed during installation. The instructions and any maintenance instructions must be passed on by the installer to the user.
6. All components specified for the intended installation shall be fitted to ensure compliance.
7. It is important to follow the instructions precisely to ensure the lock and strike plate are correctly positioned.

Note: Our Cabinet Lock will provide a high degree of safety and reasonable security provided it is fitted to door frames that are suitable and in good condition.

DRAWINGS NOT TO SCALE. INFORMATION IN THIS DATASHEET MAY BE CHANGED WITHOUT NOTICE.

This product has been designed for use in weather protected areas, and is NOT suitable for use in hazardous (flammable or explosive) atmospheres.

IMPORTANT SAFETY INSTRUCTIONS AND WARNINGS

1. Read and follow all instructions prior to installing and using this product.
2. These instructions or a full copy of these instructions should be provided to the user.
3. These instructions should be kept by the end user for future reference.
4. Obey and heed all warnings on the product and in the manual.
5. Ensure the functionality, specification and configuration of the EL110 Cabinet Lock is befitting for the intended application and environment. This may include in the event of a power failure and the ability to access the cabinet.
6. Do not use this unit near excess water or moisture not typical to natural rainfall and installation practices i.e., installed in a door frame/enclosure.
7. Do not use this unit in environments with excessive in-air dust that could accumulate and prevent correct operation.
8. Avoid prolonged exposure to direct sunlight or heat.
9. This product is not suitable for environments with explosive or flammable atmospheres.
10. Only use attachments, accessories and fixings as specified by the manufacturer.
11. Clean with a dry cloth only, do not use chemicals.
12. Refer all servicing to qualified service personnel. Servicing or replacement is required when the unit has been damaged. This may include either mechanical or electrical issues. This may also include ingress of liquid spilled or objects which have fallen into the unit or if the unit has been exposed to excessive rain or moisture and no longer operates normally. Do not attempt to service this product yourself.
13. Opening or removing covers may expose you to dangerous voltages or other hazards.
14. To prevent risk of fire or electric shock ensure the power supply or system is suitable for this product in addition to any other units already sharing the same power supply or system.
15. Do not let objects or liquids enter the product as they may prevent correct operation, possibly preventing door access or short-out parts that could result in a fire or electric shock.
16. Modification of this product in any way may affect both its functionality and compliance status and will void any warranty and claim to compliance, ratings or performance.
17. Ensure the correct power supply is connected.
DO NOT connect AC mains power to this product.

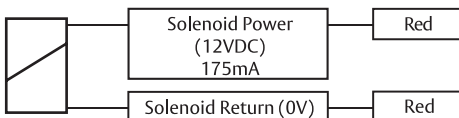
ELECTRICAL SPECIFICATIONS

CAUTION! Incorrect supply voltage may cause damage not covered by warranty.

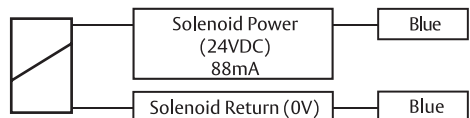
Please check supply voltage with a suitable meter to ensure voltage is within $\pm 15\%$ of nominal voltage of 12VDC (or 24VDC) with the strike powered.

**This product has been designed for use in weather protected areas only.
DO NOT OIL OR LUBRICATE.**

12VDC versions 111301-000 & 111302-000
Solenoid wiring

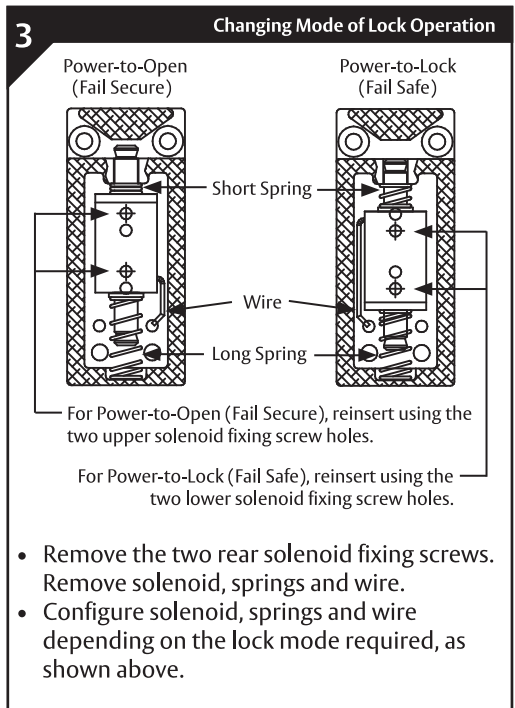
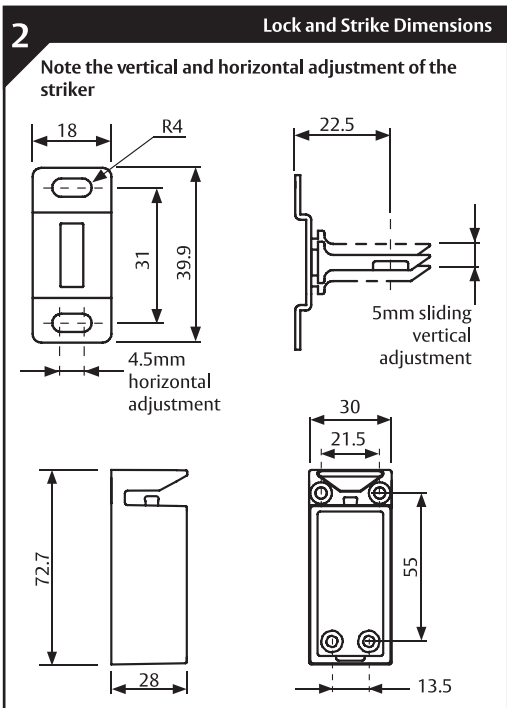
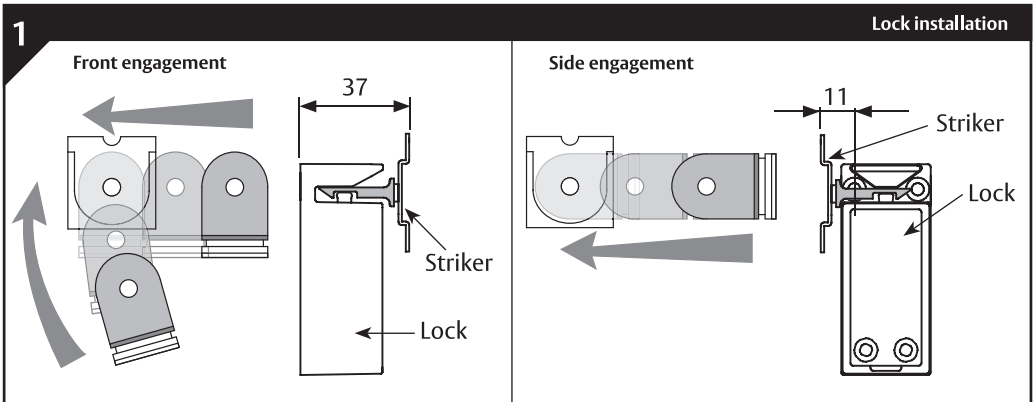


24VDC version 111304-000
Solenoid wiring



The Cabinet Lock can be mounted to engage from the front or side and is suitable for sliding drawers or swing cabinet doors.

1. Mount lock on inside drawer.
2. Connect cables and allow sufficient space between the lock unit and cut-out for wires.
3. Ensure strike plate is aligned and adjusted as shown.
4. To prevent over or undertravel:
 - For front engagement, set distance between back mounting face of lock and striker to 37mm.
 - For side engagement, set distance between back mounting face of striker and centre of nearest fixing hole of lock to 11mm.



MAINTENANCE

Clean the external surfaces with a dry cloth only, do not use chemicals.

FAULTS, REPAIRS & RETURNS

This product contains no user serviceable parts. Please contact your local supplier.

STORAGE AND TRANSPORT

The product should be transported and stored in its original packaging.

DISMANTLE & ENVIRONMENT

Dispose of packaging and product in a responsible manner, this may include recycling at your nearest recycling centre. Including the re-use and recycling of the materials & packaging of this product. Contact your local authority to find the nearest electrical and electronic equipment waste disposal point. This product must not be disposed of with regular household waste.

CERTIFICATION AND CONTACT DETAILS

EU CE DECLARATION OF CONFORMITY (DoC)

Hereby, ASSA ABLOY Australia Pty Ltd declares that the EL110 Cabinet Lock is in compliance with the CE Directives including the Electromagnetic Compatibility (EMC) directive, Restriction of Hazardous Substances (RoHS) directive & Registration, Evaluation, Authorisation and Restriction of Chemicals (REACH) Regulation.

The full text of the EU declaration of conformity is available at www.trimec.com.au/au/en/products/electric-strikes/el110-electric-cabinet-lock

UKCA DECLARATION OF CONFORMITY (DoC)

Hereby, ASSA ABLOY Australia Pty Ltd declares that the EL110 Cabinet Lock is in compliance with the United Kingdom (UK) legislations including the Electromagnetic Compatibility, Restriction of the Use of Certain Hazardous Substances in Electrical and Electronic Equipment & the Registration, Evaluation, Authorisation and Restriction of Chemicals (REACH) Regulations.

The full text of the UKCA declaration of conformity is available at www.trimec.com.au/au/en/products/electric-strikes/el110-electric-cabinet-lock

RCM Australia & New Zealand

Hereby, ASSA ABLOY Australia Pty Ltd declares that the EL110 Cabinet Lock is in compliance with the Regulatory Compliance Mark (RCM) for Australia and New Zealand.

Manufacturer details

ASSA ABLOY Australia Pty Ltd.
235 Huntingdale Road, Melbourne
Victoria, 3166, Australia
Phone: 1300 LOCK UP (1300 562 587)
www.assaabloyopeningsolutions.com.au

UK Representative

ASSA ABLOY Opening Solutions
School Street, Willenhall, West Midlands
WV13 3PW, United Kingdom
www.assaabloyopeningsolutions.com.uk

